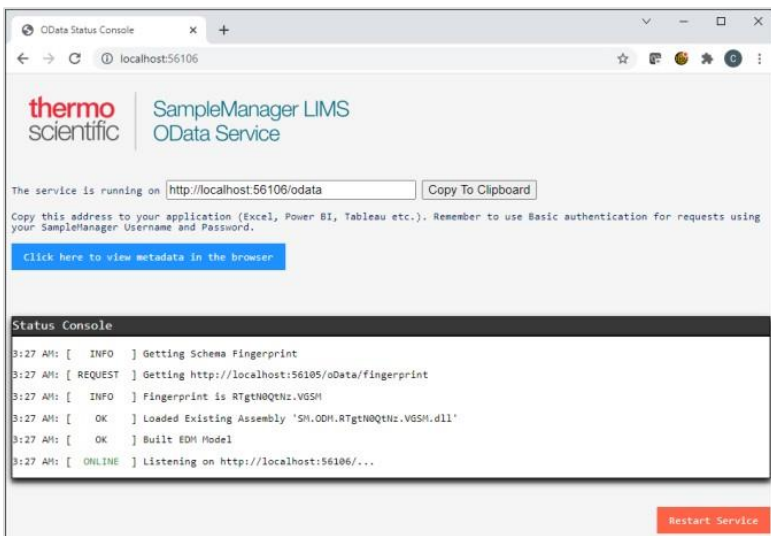
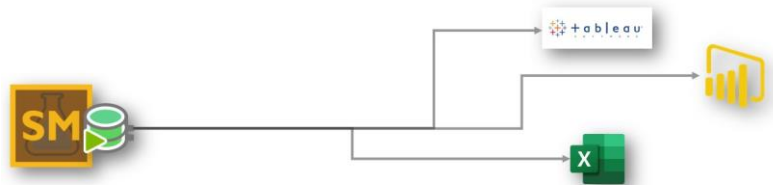


SampleManager LIMST[™] OData Service

Thermo Scientific[™] SampleManager[™] LIMS 21.1 OData service allows external applications or web publishing services to obtain data from your SampleManager LIMS[®] instance.



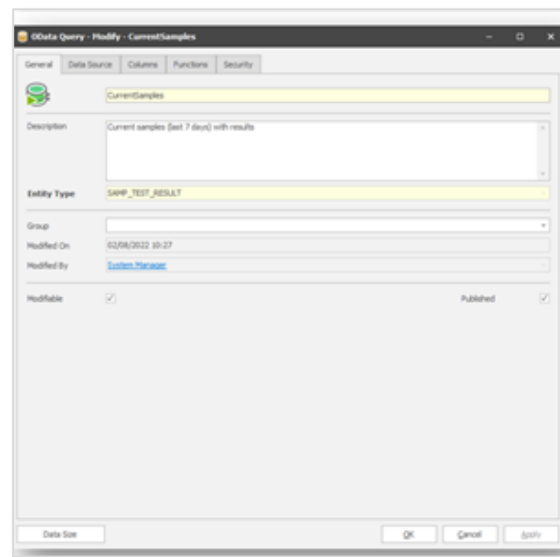
The Service Uses Its Own Dedicated Windows / Console Service To Safely Deliver Specific Data To External Applications.

Being more flexible than other REST-based web services, it provides a uniform way to describe the data and the data model for easy interoperability between data sources, applications, services, and clients. The SampleManager LIMS[®] OData Service is supported by applications such as Excel, Power BI, Tableau, and many more.

It differs from direct database access as it utilizes the enhanced data governance of SampleManager LIMS[®], honors roles, limits which fields can be seen, and provides custom functions. External applications can only see the query definitions provided by the service.

SampleManager LIMS[®] OData Service utilizes the OData queries to define the selection criteria on rows from a SampleManager entity type, the columns of the selected data that are available through the SampleManager LIMS[®] OData service, and an optional set of functions to process the selected data.

ODATA QUERIES



Used by permission of Thermo Fisher Scientific, the copyright owner